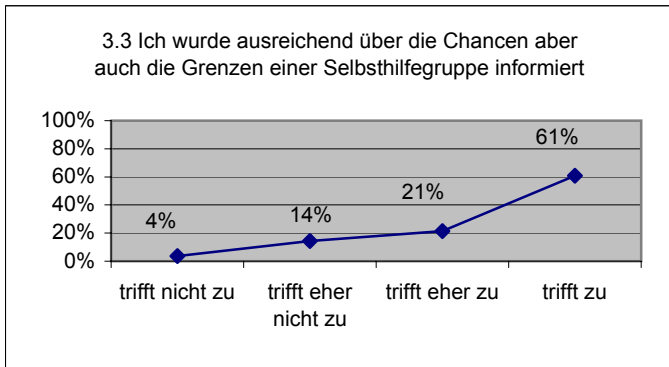
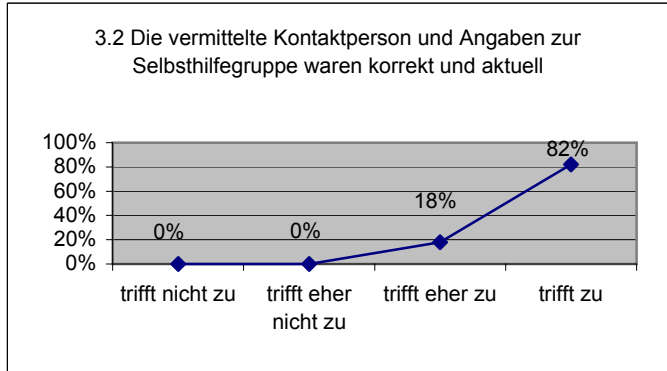
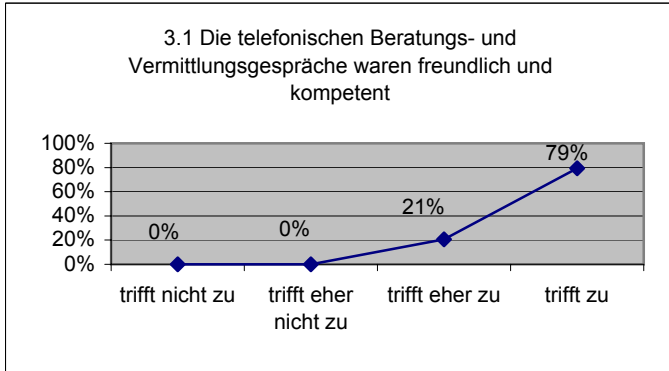
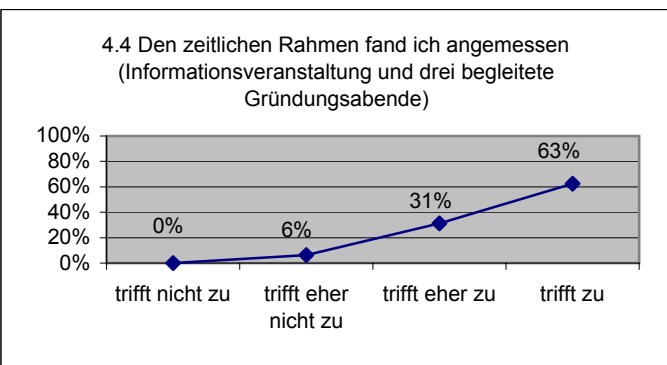
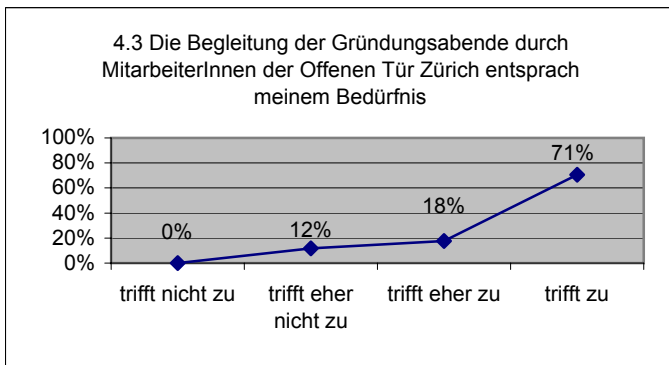
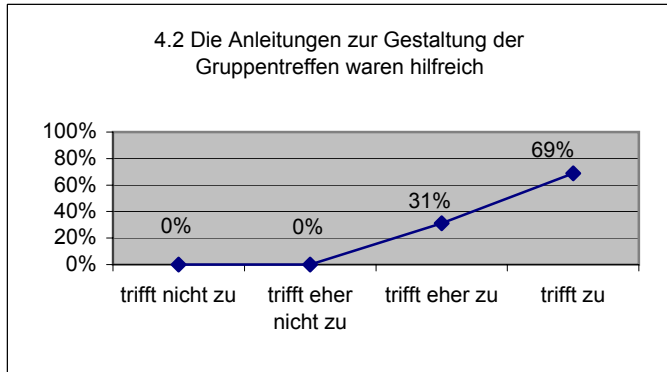
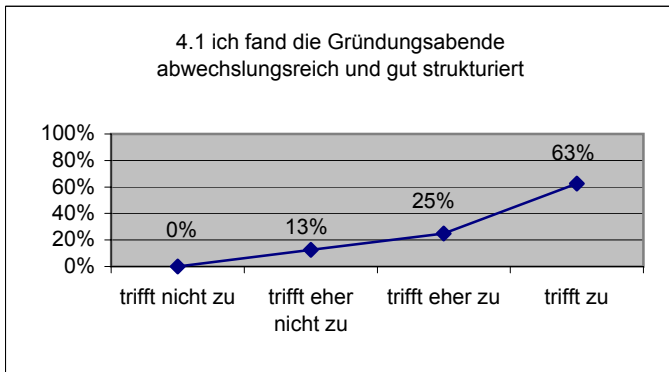


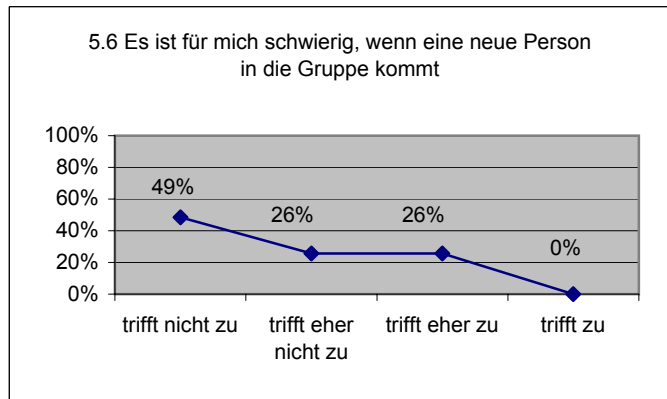
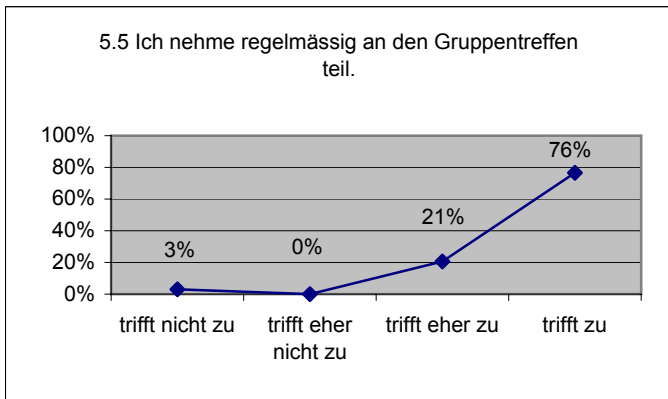
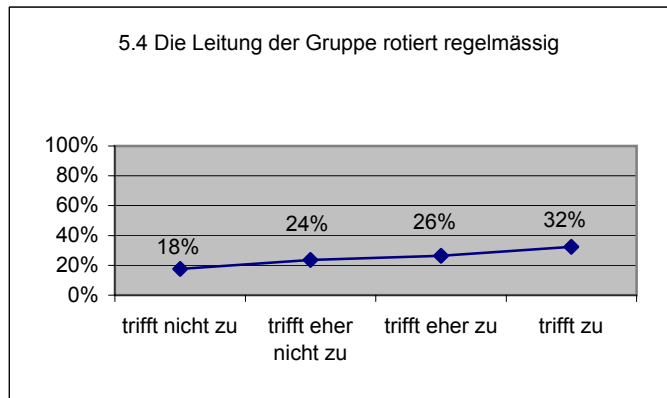
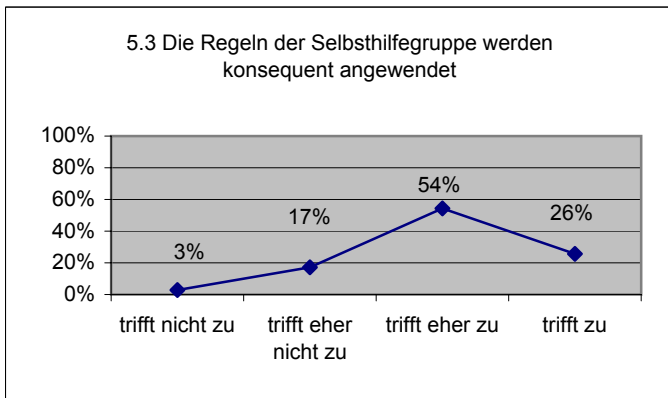
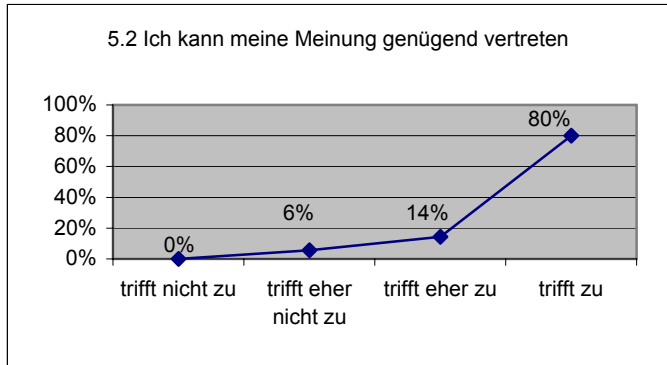
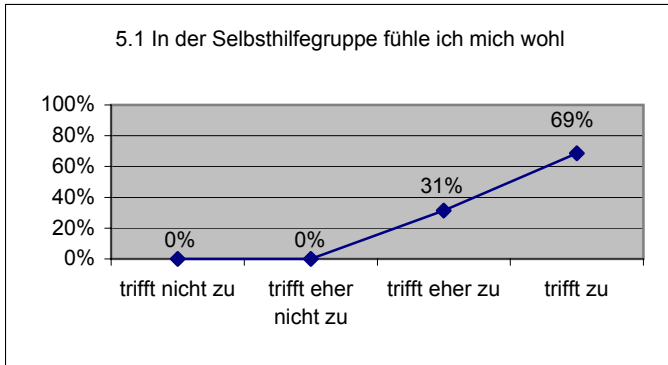
3. Beurteilung der telefonischen Beratung



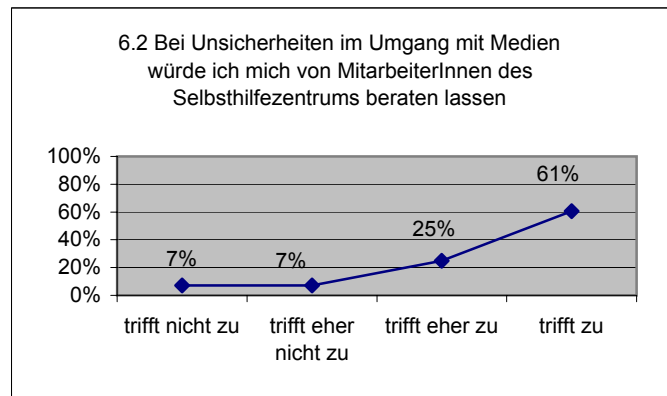
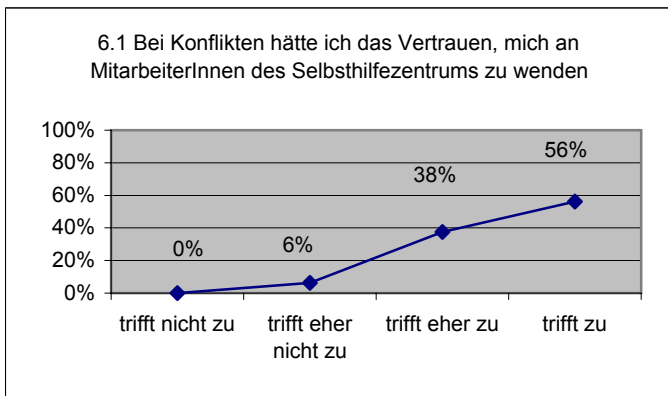
4. Beurteilung der Gründungsabende



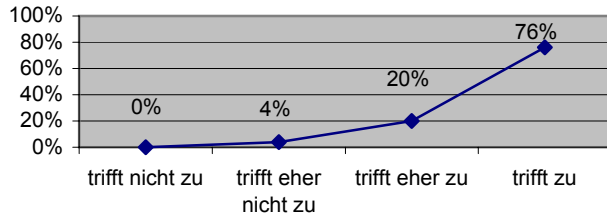
5. Beurteilung der Gruppentreffen



6. Beurteilung der angebotenen Dienstleistungen



6.3 die Lage des neuen Selbsthilfezentrums und die Gestaltung der Räume entsprechen meinen Erwartungen



6.4 Der Austausch an den Jahrestreffen der Selbsthilfegruppen war hilfreich für den Kontakt und Austausch mit anderen Selbsthilfegruppen

